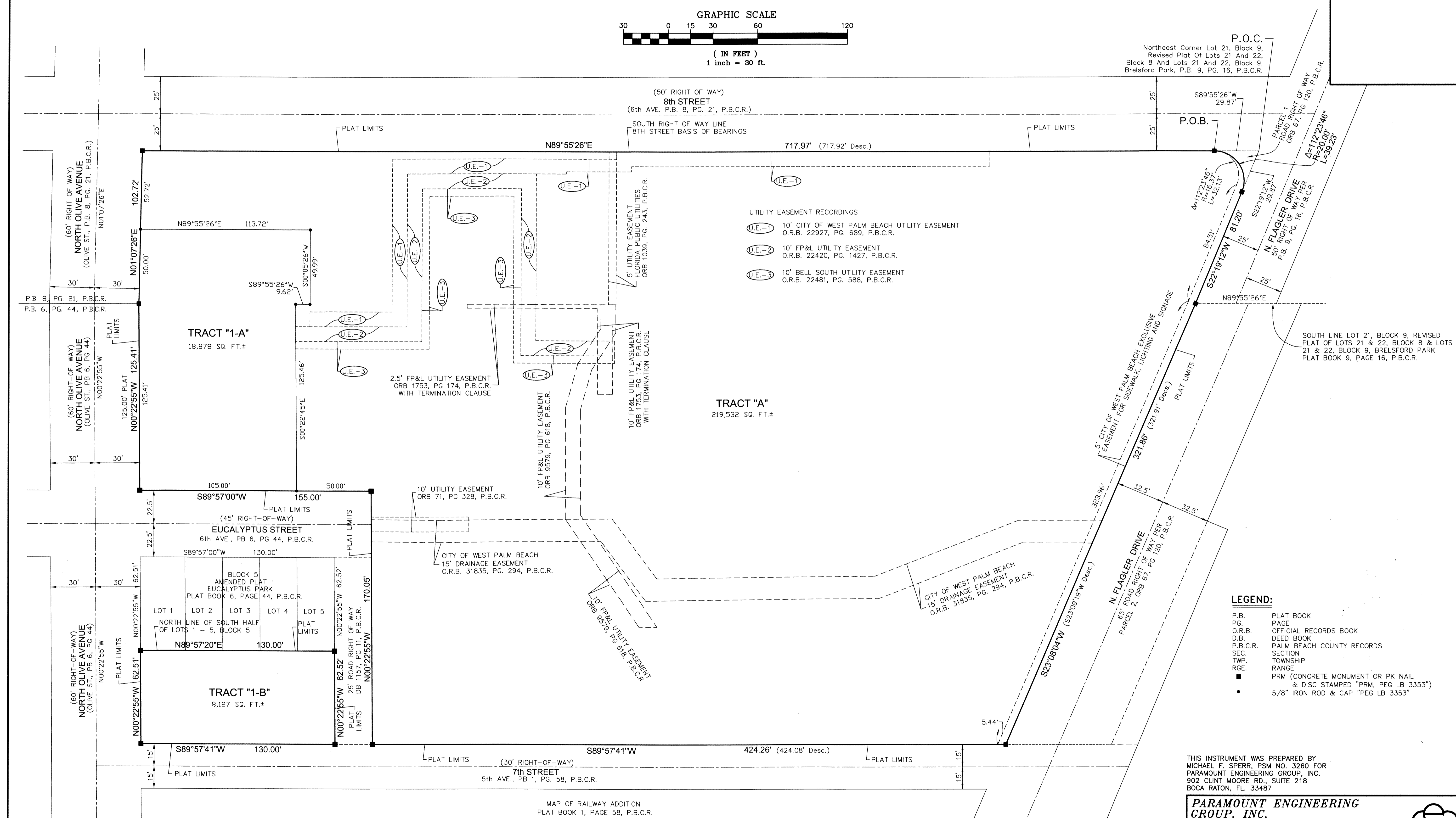
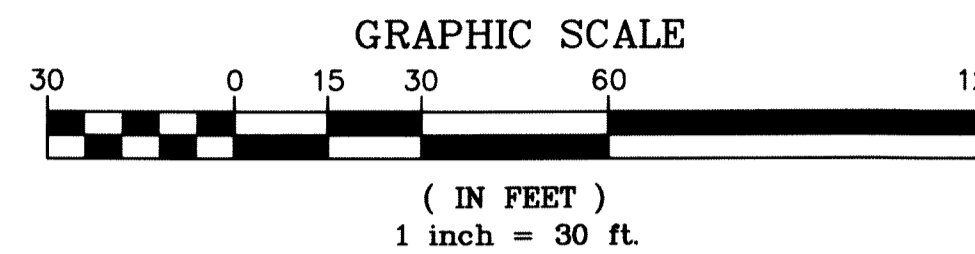


ROSARIAN ACADEMY

BEING A REPLAT OF A LOTS 1 THROUGH 20, BLOCK 9, BRELSFORD PARK, PLAT BOOK 8, PAGE 21; LOTS 21 AND 22, BLOCK 9, REVISED PLAT OF LOTS 21 AND 22, BLOCK 8 AND LOTS 21 AND 22, BLOCK 9, BRELSFORD PARK, PLAT BOOK 9, PAGE 16; LOTS 1 THROUGH 7, BLOCK 2; LOTS 1 THROUGH 3, BLOCK 3; BLOCK 4: LOT 7, BLOCK 5 AND THE SOUTH ONE HALF OF LOTS 1 THROUGH 5, BLOCK 5, AMENDED PLAT OF EUCLYPTUS PARK, PLAT BOOK 6, PAGE 44, ALL BEING RECORDED IN THE PUBLIC RECORDS OF PALM BEACH COUNTY, FLORIDA AND LYING IN SECTIONS 15 AND 22, TOWNSHIP 43 SOUTH, RANGE 43 EAST SAID LANDS BEING SITUATE IN THE CITY OF WEST PALM BEACH, PALM BEACH COUNTY, FLORIDA.

105



- UTILITY EASEMENT RECORDINGS
- (U.E.-1) 10' CITY OF WEST PALM BEACH UTILITY EASEMENT O.R.B. 22927, PG. 689, P.B.C.R.
 - (U.E.-2) 10' FP&L UTILITY EASEMENT O.R.B. 22420, PG. 1427, P.B.C.R.
 - (U.E.-3) 10' BELL SOUTH UTILITY EASEMENT O.R.B. 22481, PG. 588, P.B.C.R.

- LEGEND:
- P.B. PLAT BOOK
 - PG. PAGE
 - O.R.B. OFFICIAL RECORDS BOOK
 - D.B. DEED BOOK
 - P.B.C.R. PALM BEACH COUNTY RECORDS
 - SEC. SECTION
 - TWP. TOWNSHIP
 - RCE. RANGE
 - PRM (CONCRETE MONUMENT OR PK NAIL & DISC STAMPED "PRM, PEG LB 3353")
 - 5/8" IRON ROD & CAP "PEG LB 3353"

THIS INSTRUMENT WAS PREPARED BY
MICHAEL F. SPERR, PSM NO. 3260 FOR
PARAMOUNT ENGINEERING GROUP, INC.
902 CLINT MOORE RD., SUITE 218
BOCA RATON, FL. 33487

PARAMOUNT ENGINEERING GROUP, INC.
ENGINEERS, ARCHITECTS, PLANNERS, SURVEYORS
902 Clint Moore Rd., Suite 218, Boca Raton, FL 33487
TELEPHONE: (561) 989-2280 - FAX: (561) 989-2284
EMAIL: paramountengineeringgroup@aol.com
State of Florida Certificate of Authorization No. LB9363

DRAWN:	DATE:	CHECKED BY:	SHEET:
M.F.S.	02-03-20	M.F.S.	2 OF 2

MAP OF RAILWAY ADDITION
PLAT BOOK 1, PAGE 58, P.B.C.R.